

Getting Started with OptoLyzer® Studio CBA Bundle and OptoLyzer® Studio LSA Bundle

Thank you for purchasing an OptoLyzer® Studio Bundle. In this document you will find information how to get immediately started with your new software OptoLyzer® Studio Entry.

1. As a first step, you need to install the OptoLyzer Studio software on your PC. Please go to <https://www.k2l.de/products/1/OptoLyzer%C2%AE%20Studio%20Entry/>. At the bottom right side, you will find the installer.
2. In order to use OptoLyzer Studio Entry features, a corresponding license is needed which is contained in the WIBU-SYSTEMS CmStick that came as part of your delivery. This CmStick needs to be plugged into a free USB port of your PC.



Picture 1 CmStick

3. After that you can start OptoLyzer Studio. A splash screen will indicate the Entry edition and the version of the software, then you will see the OptoLyzer Studio start screen.



Picture 2 Splash Screen

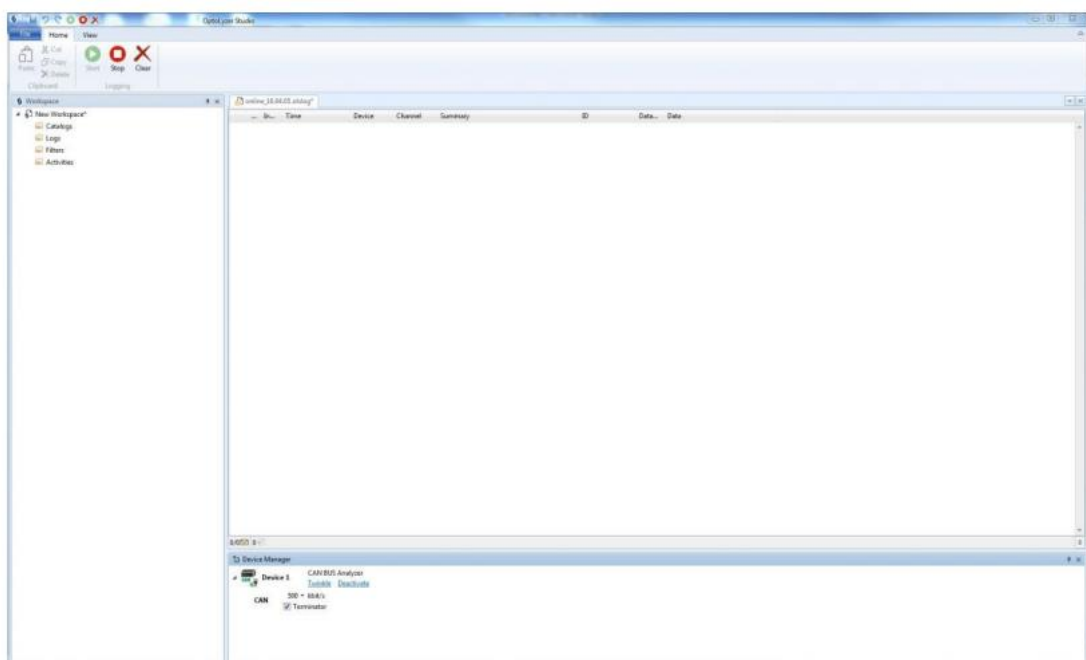
4. Optolyzer Studio Entry supports the Microchip CAN BUS Analyzer and the Microchip LIN Serial Analyzer hardware interfaces for access to CAN and LIN busses. After you have either attached the Microchip CAN BUS Analyzer or the Microchip LIN Serial to your PC via USB (the Optolyzer Studio Entry supports one device at a particular point in time), you can use the Device Manager (can be accessed over the ribbon on top of the GUI via View) to make sure that your hardware device is correctly recognized.



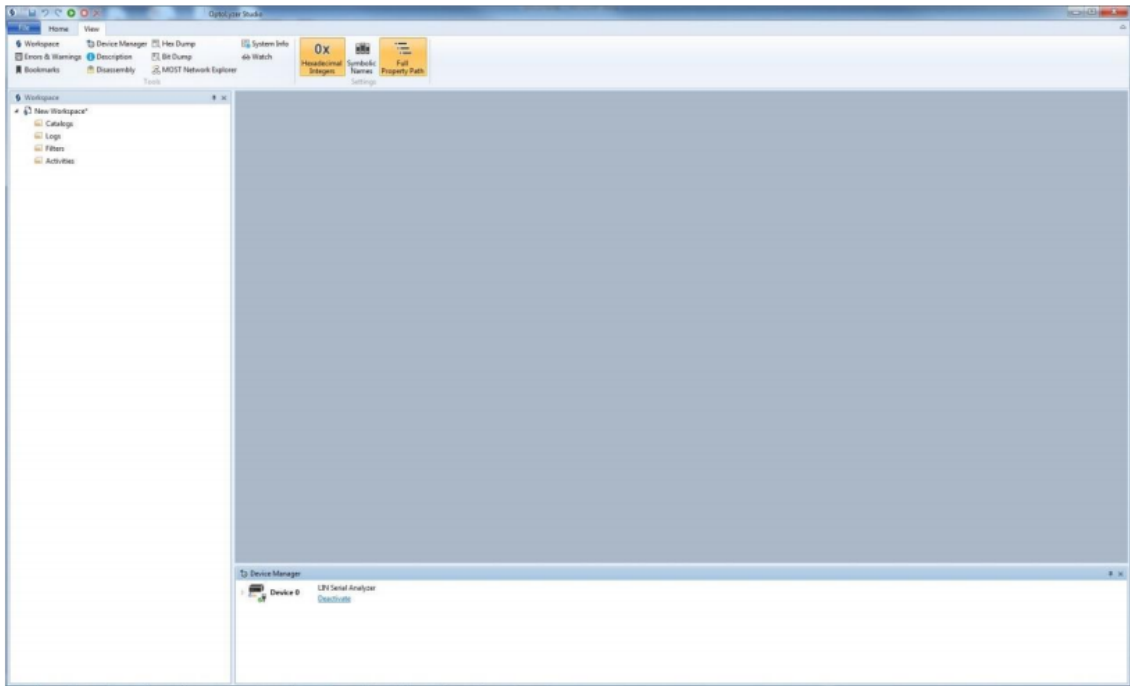
Picture 3 CAN Bus Analyzer



Picture 4 LIN Serial Analyzer

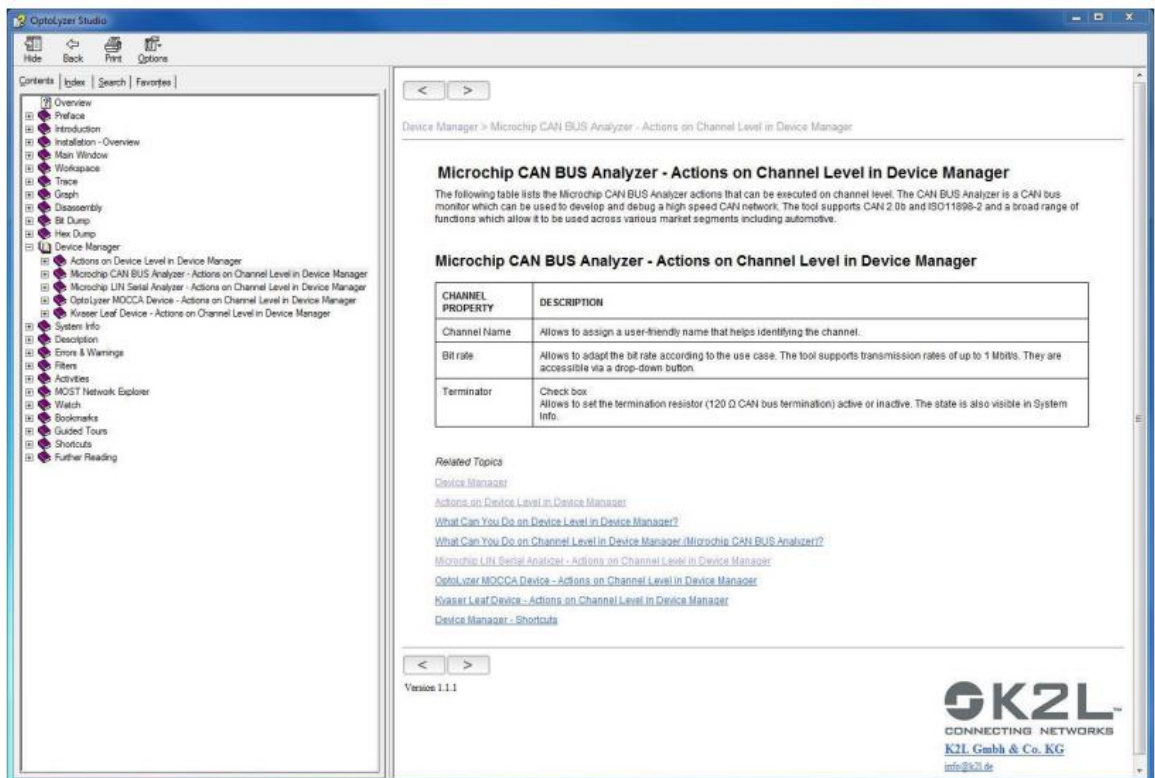


Picture 5 CAN Bus Analyzer in the Device Manager



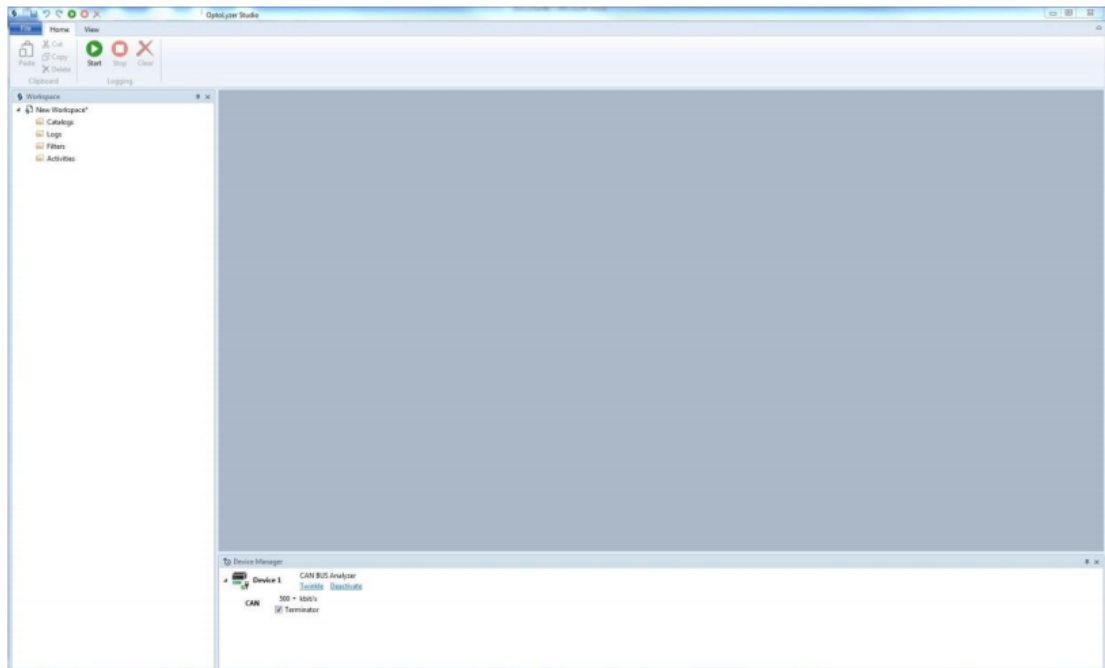
Picture 6 LIN Serial Analyzer in the Device Manager

- You can use the Device Manager to adjust certain settings of your attached hardware device. Please refer to corresponding sections of the Optolyzer Studio documentation. Please press F1 and then go to Device Manager => Microchip CAN BUS Analyzer - Actions on Channel Level in Device Manager or Device Manager => Microchip LIN Serial Analyzer - Actions on Channel Level in Device Manager.

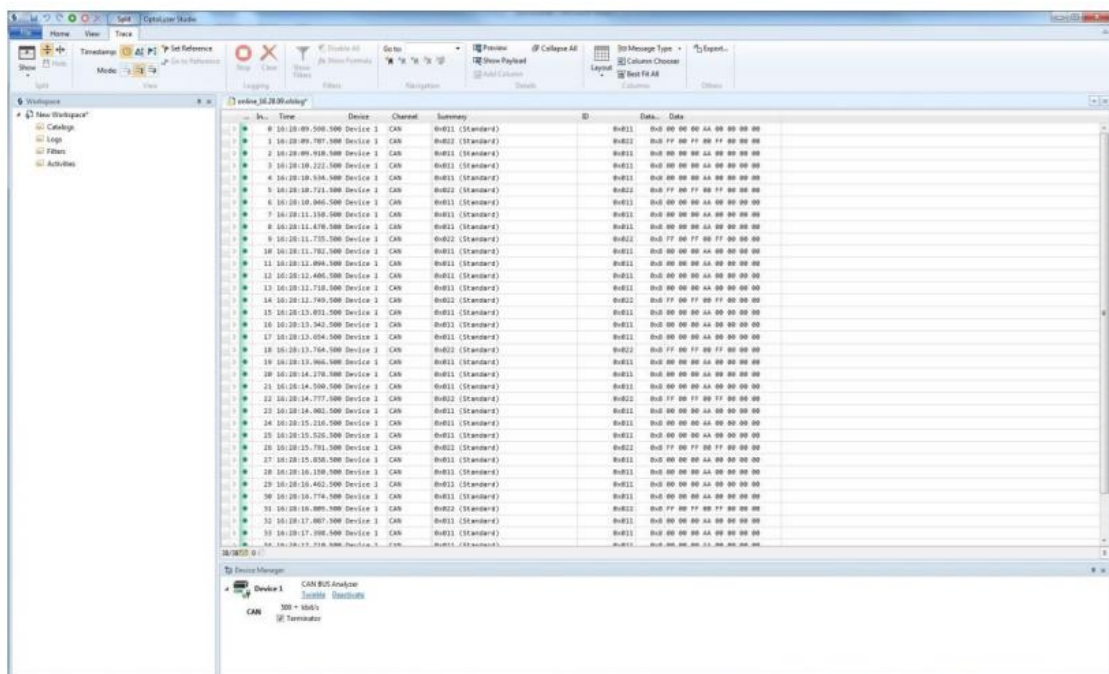


Picture 7 Optolyzer Studio Documentation

- When the device settings (like the baud rate) are made, you can start tracing by clicking the green arrow icon (Start) at the top of the OptoLyzer Studio GUI (over Home).



Picture 8 OptoLyzer Studio GUI with green Start button



Picture 9 OptoLyzer Studio with Trace View

Message injection is also possible with OptoLyzer Studio Entry. Please refer to the Activities section of the User Manual.